

KILKENNY FLYING CLUB PRE-FLIGHT CHECKLIST RALLYE

COCKPIT

- ✓ P.O.H. available in plane
- ✓ Certificates exist
- ✓ Control wheel lock – **REMOVE**
- ✓ Ignition – **OFF**
- ✓ Avionics – **OFF**
- ✓ All lights and pitot heat - **ON**
- ✓ Master switch – **ON**
- ✓ Check fuel gauge
- ✓ Walk round, beacon, nav and landing lights
- ✓ Static pressure alternate source – **OFF**
- ✓ Flaps down for inspection
- ✓ Master switch – **OFF**
- ✓ Grab fuel cup, oil rag and handkerchief

PORT FUSELAGE

- ✓ Check skin, no damage
- ✓ Antennas
- ✓ Check port static vent, clean and clear
- ✓ Baggage door – **CLOSED and LOCKED**

EMPENNAGE

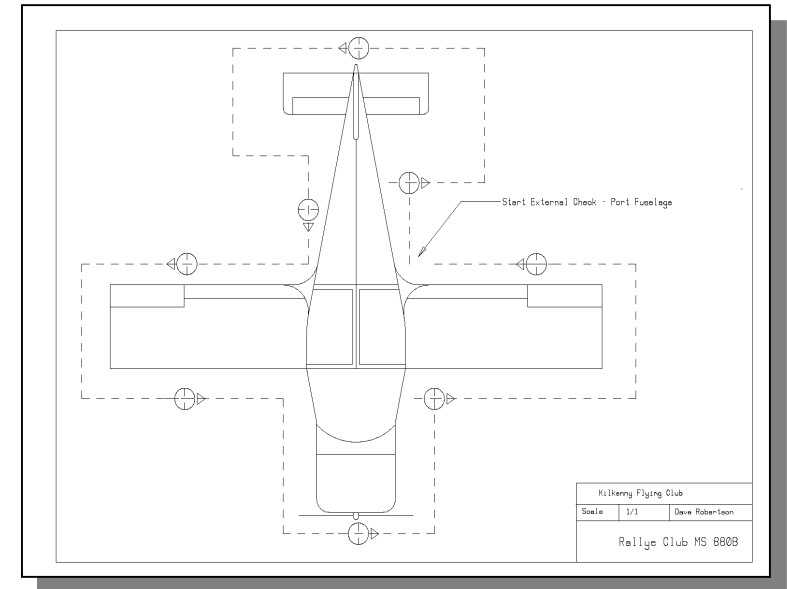
- ✓ Check elevator
 - i. Hinges
 - ii. Control rod
 - iii. Freedom of movement
- ✓ Check rudder
 - i. Hinges
 - ii. Control rod
 - iii. Spiral prop wash trim tab
 - iv. Freedom of movement
 - v. Untie the tail
 - vi. Remove rudder gust lock

STARBOARD FUSELAGE

- ✓ heck skin, no damage
- ✓ Antennas
- ✓ Check port static vent, clean and clear
- ✓ Baggage door – **CLOSED and LOCKED**

STARBOARD WING

- ✓ Check flaps
 - i. Check hinge
 - ii. Check pushrod
- ✓ Aileron
 - i. Check free and clear movement
 - ii. Check hinges
 - iii. Check pushrod
- ✓ Check end lights – **not busted**
- ✓ Check Leading edge and leading edge slats (Don't push)
- ✓ Check outer wing fuel vent – clean and unobstructed
- ✓ Check the port wheel
 - i. Check strut
 - ii. Check brakes
 - iii. Check tyre
 - iv. Remove chock
- ✓ Remove tie down
- ✓ Take fuel sample – **no water or sediment**
- ✓ Climb up and check fuel tank
- ✓ Check fuel level
- ✓ Breather holes – **clear**
- ✓ Check the starboard cowling – **no loose screws**



Refer to drawing, start at port fuselage and work round exterior checking in sequence

KILKENNY FLYING CLUB PRE-FLIGHT CHECKLIST RALLYE

ENGINE AND HOUSING

- ✓ Check the engine
 - i. Drain fuel, approximately 4 seconds worth
 - ii. Check oil level – **NO MORE THAN 2QT UNDER FULL – See POH**
 - iii. Check belt tension
 - iv. Check landing light housing
 - v. Check air filter – Clean
- General examination, loose connections, oil leakage
- ✓ Check propeller
 - i. Check all prop edges, no chips
 - ii. Check spinner
- ✓ Check nose wheel
 - i. Check tyre
 - ii. Check brakes
 - iii. Check shock absorber
 - iv. Check stabilizer
- ✓ Check left and right cowling
 - No loose screws
 - All clips secured
 - Oil flap secured

PORT WING

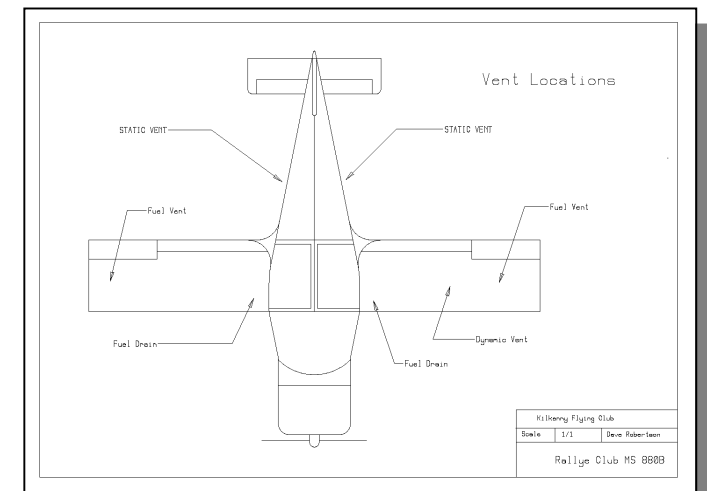
- ✓ Check flaps
 - i. Check hinge
 - ii. Check pushrod
- ✓ Aileron
 - i. Check free and clear movement
 - ii. Check hinges
 - iii. Check pushrod
- ✓ Check end lights – **not busted**

- ✓ Check Leading edge and leading edge slats (Don't push)
- ✓ Check port wing Dynamic inlet – clean and unobstructed
- ✓ Check outer wing fuel vent – clean and unobstructed
- ✓ Check the port wheel
 - i. Check strut
 - ii. Check brakes
 - iii. Check tyre
 - iv. Remove chock
- ✓ Remove tie down
- ✓ Take fuel sample – **no water or sediment**
- ✓ Climb up and check fuel tank
 - i. Check fuel level
 - ii. Breather holes – **clear**
- ✓ Check the port cowling – **no loose screws**

AFTER LANDING AND CLEAR OF THE RUNWAY

- ✓ Carburetor heat – **OFF**
- ✓ Transponder – **OFF**
- ✓ Flaps – **UP**
- ✓ Trim – **NEUTRAL**
- ✓ Select **Ground Control** on your radio stack
- ✓ Rallye <call sign>, holding short of <location>, request taxi to
- ✓ Wait for clearance
- ✓ Taxi to parking spot
- ✓ Landing lights – **OFF**
- ✓ Avionics – **OFF**
- ✓ Electrics – **OFF**

- ✓ Mixture – **CUTOFF**
- ✓ Ignition – **OFF**
- ✓ All lights **except** for beacon - **OFF**
- ✓ Master switch – **OFF**
- ✓ Fuel selector - **OFF**



Refer to drawing – Check locations of vents for checking. Make sure you drain fuel at both drains